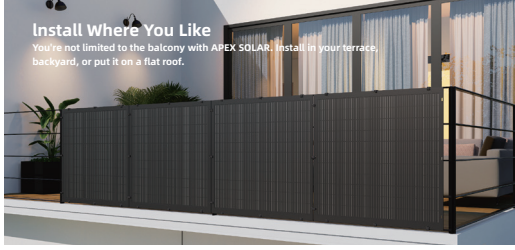


A P E X SOLAR

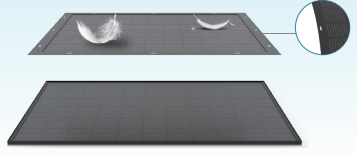
Flexible Balcony Solution



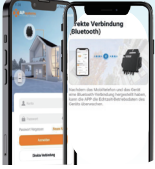
Introducing Apex Solar Power System



Easy to install:
70% lighter



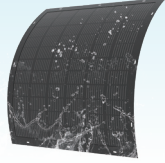
Control Power with the APsystems App



12 Year Guarantee



IP67 Protection class



No Installation request required

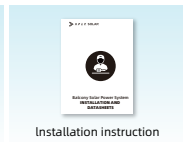
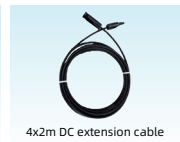
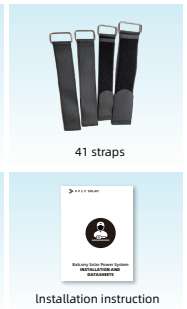
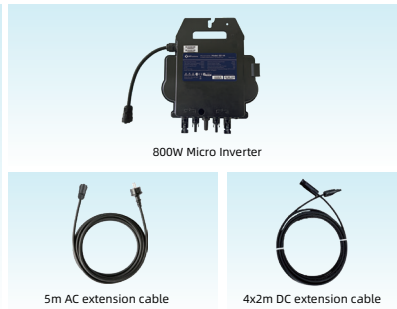
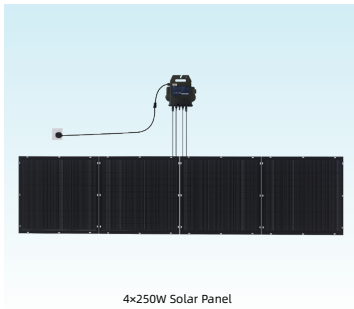


23% high solar conversion rate

Our advanced, flexible solar panels with a conversion efficiency of 23% generate an average of 3 kWh/day. They offer a simple, stylish solution for the efficient production of green energy.



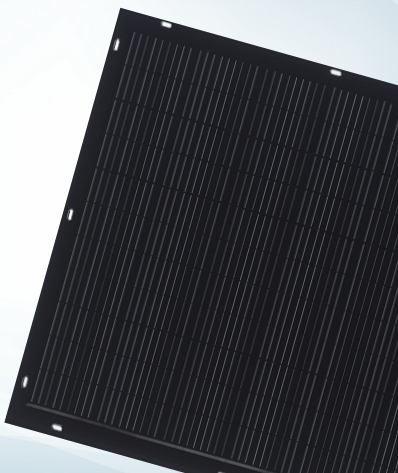
What's In The Box



APEX-FLEX-240-260W

Flexible Solar Panel

240-260W >>



First-Class 17.95% Conversion
Easy installation

65%

Lighter than
regular components



Smooth Black
Surface

Electrical Performance Parameter (STC)

Parameter Name	APEX-FLEX-240	APEX-FLEX-245	APEX-FLEX-250	APEX-FLEX-255	APEX-FLEX-260
Maximum power (Pm)	240W	245W	250W	255W	260W
Power Tolerance	0~+5w	0~+5w	0~+5w	0~+5w	0~+5w
Maximum Power Voltage(Vmp)	18.5V	18.8V	19.2V	19.4V	19.7V
Maximum Power Current(Imp)	13.00A	13.02A	13.06A	13.14A	13.20A
Open-circuit voltage (Voc)	22.3V	22.7V	23.2V	23.7V	23.9V
Short-circuit current (Isc)	13.61A	13.65A	13.70A	13.70A	13.78A
Module Efficiency(%)	17.24%	17.60%	18.00%	18.32%	18.68%

STC: Irradiance 1000W/m² , module temperature 25°C ,AM=1.5

Mechanical

Cell array	72 (12*2*3)	Back board colour	White PV Backsheet
Size	1200mm(L)*1160 mm(W)	Terminal block	Protection grade IP67
Size of 46-piece box	1200*W:1160*H:17 mm	Cable	4mm ²
Front film	Lightweight high transparent polymer materials	Diode	2
Connector	(+)(-)-300 mm	Weight	4.9KG

Temperature coefficient

Battery nominal operating temperature	41±2°C
Current temperature coefficient (Isc)	+0.020%/°C
Voltage temperature coefficient	-0.28%/°C
Power factor (Pm)	-0.38%/°C

Working conditions

Maximum System Voltage	600VDC
Maximum Series Fuse Rating	20A
Operating Temperature	-40~+85°C
Connector	MC4 compatible

Microinverter-EZ1-M

Microinverter

800W >>
Upgrade Over the Air



Datasheet | EZ1 Microinverter Series

Model	EZ1-S	EZ1-M
Region		EMEA
Input Data (DC)		
Recommended PV Module Power (STC) Range	255Wp-550Wp+	300Wp-730Wp+
Peak Power Tracking Voltage		28V-45V
Operating Voltage Range		16V-60V
Maximum Input Voltage		60V
Maximum Input Current	18A x 2	20A x 2
Isc PV	22.5A x 2	25A x 2
Output Data (AC)		
Maximum Continuous Output Power	600VA	600VA ⁽³⁾ /799VA
Nominal Output Voltage/Range ⁽¹⁾		230V/184V-253V
Nominal Output Current	2.6A	2.6A ⁽³⁾ /3.5A
Nominal Output Frequency/ Range ⁽¹⁾		50Hz/48Hz-51Hz
Default Power Factor		0.99
Efficiency		
Peak Efficiency		97.3%
Nominal MPPT Efficiency		99.5%
Night Power Consumption		20mW
Mechanical Data		
Operating Ambient Temperature Range ⁽²⁾		- 40 °C to + 65 °C
Storage Temperature Range		- 40 °C to + 85 °C
Dimensions (W x H x D)		263mm x 218mm x 36,5mm
Weight		2.8kg
DC Connector Type		Stäubli MC4 PV-ADBP4-S2&ADSP4-S2
Cooling		Natural Convection - No Fans
Enclosure Environmental Rating		IP67
Power Cord (Optional)		
Wire Size		1.5mm ²
Cable Length		5M as default
Plug Type		Schuko
Features		
Communication		Built-in Wi-Fi and Bluetooth
Maximum Units Can Be Connected ⁽⁴⁾		2
Isolation Design		High Frequency Transformers, Galvanically Isolated
Energy Management		AP EasyPower APP
Warranty		12 Years Standard
Compliances		
Safety, EMC & Grid Compliances		EN 62109-1/-2; EN 61000-1/-2/-3/-4; EN 50549-1; DIN V VDE V 0126-1-1; VFR; UTE C15-712-1; CEI 0-21; UNE 217002; NTS; RD647; VDE-AR-N 4105





APEX SOLAR